

# Confined Space Inventory for Saint Cloud Public Schools



**Inspector:** Rachel Koehler

**Inspection Date:** 12/13/2006

**Building:** Oak Hill Elementary

**Location:** Exterior Building South Courtyard

**Type of Space:** Storm sewer

**Space Classification:** Permit

**Potential Hazards:**

*Potential for oxygen deficiency*

*Engulfment*

*Configuration*

**Number of Entries into Space:** 1

**Other Considerations:**

*City sewer or water*

*Fall hazards*

*Poor lighting*

*Slick/wet surfaces*

**Comments:** None



**Photo Date:** 12/13/2006

**Photo Description**

Storm Sewer

# Confined Space Inventory for Saint Cloud Public Schools



**Inspector:** Rachel Koehler

**Inspection Date:** 12/13/2006

**Building:** Oak Hill Elementary

**Location:** Exterior Building North Courtyard

**Type of Space:** Storm sewer

**Space Classification:** Permit

**Potential Hazards:**

*Potential for oxygen deficiency*

*Engulfment*

*Configuration*

**Number of Entries into Space:** 1

**Other Considerations:**

*City sewer or water*

*Fall hazards*

*Poor lighting*

*Slick/wet surfaces*

**Comments:** None



**Photo Date:** 12/13/2006

**Photo Description**

Storm Sewer



# Confined Space Inventory for Saint Cloud Public Schools



**Inspector:** Rachel Koehler

**Inspection Date:** 12/13/2006

**Building:** Oak Hill Elementary

**Location:** Boiler Room Upper

**Type of Space:** Boiler stack

**Space Classification:** *Permit*

**Potential Hazards:**

*Potential for oxygen deficiency*

*Engulfment*

*Configuration*

**Number of Entries into Space:** 1

**Other Considerations:**

*Falling objects*

*Poor lighting*

*Temperature extremes*

**Comments:** Lockout/Tagout procedures for boilers are required prior to entry.



**Photo Date:** 12/13/2006

**Photo Description**

Boiler Stack

# Confined Space Inventory for Saint Cloud Public Schools



**Inspector:** Rachel Koehler

**Inspection Date:** 12/13/2006

**Building:** Oak Hill Elementary

**Location:** Boiler Room

**Type of Space:** Boiler #1

**Space Classification:** Non-Permit

**Potential Hazards:**

*No Hazards*

**Number of Entries into Space:** 1

**Other Considerations:**

*Electrical*

*Gas lines*

*Temperature extremes*

**Comments:** Lockout/Tagout procedures for boiler are required prior to entry.



**Photo Date:** 12/13/2006

**Photo Description**

Boiler #1



# Confined Space Inventory for Saint Cloud Public Schools



**Inspector:** Rachel Koehler

**Inspection Date:** 12/13/2006

**Building:** Oak Hill Elementary

**Location:** Boiler Room

**Type of Space:** Boiler #2

**Space Classification:** Non-Permit

**Potential Hazards:**

*No Hazards*

**Number of Entries into Space:** 1

**Other Considerations:**

*Electrical*

*Gas lines*

*Temperature extremes*

**Comments:** Lockout/Tagout procedures for boiler are required prior to entry.



**Photo Date:** 12/13/2006

**Photo Description**

Boiler #2

# Confined Space Inventory for Saint Cloud Public Schools



**Inspector:** Rachel Koehler

**Inspection Date:** 12/13/2006

**Building:** Oak Hill Elementary

**Location:** Exterior Building West side

**Type of Space:** Storm sewer ( 4 )

**Space Classification:** Permit

**Potential Hazards:**

*Potential for oxygen deficiency*

*Engulfment*

*Configuration*

**Number of Entries into Space:** 1

**Other Considerations:**

*City sewer or water*

*Fall hazards*

*Poor lighting*

*Slick/wet surfaces*

**Comments:** None



**Photo Date:** 12/13/2006

**Photo Description**

Storm Sewer



# Confined Space Inventory for Saint Cloud Public Schools



**Inspector:** Rachel Koehler

**Inspection Date:** 12/13/2006

**Building:** Oak Hill Elementary

**Location:** Exterior Building West side

**Type of Space:** Storm sewer

**Space Classification:** Permit

**Potential Hazards:**

*Potential for oxygen deficiency*

*Engulfment*

*Configuration*

**Number of Entries into Space:** 1

**Other Considerations:**

*City sewer or water*

*Fall hazards*

*Poor lighting*

*Slick/wet surfaces*

**Comments:** None



**Photo Date:** 12/13/2006

**Photo Description**

Storm Sewer

# Confined Space Inventory for Saint Cloud Public Schools



**Inspector:** Rachel Koehler

**Inspection Date:** 12/13/2006

**Building:** Oak Hill Elementary

**Location:** Exterior Building West side

**Type of Space:** Lift station

**Space Classification:** Permit

**Potential Hazards:**

*Potential for oxygen deficiency*

*Engulfment*

**Number of Entries into Space:** 1

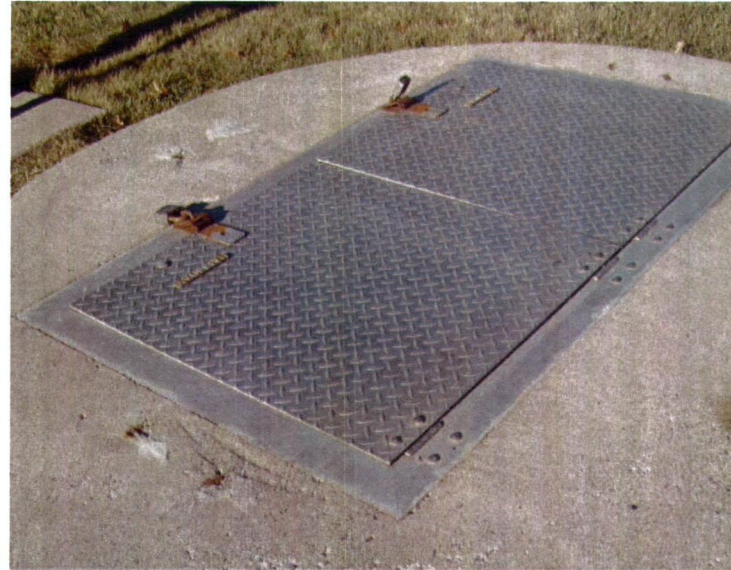
**Other Considerations:**

*Biological*

*City sewer or water*

*Slick/wet surfaces*

**Comments:** Lockout/Tagout procedures for pumps are required prior to entry.



**Photo Date:** 12/13/2006

**Photo Description**

Lift Station



# Confined Space Inventory for Saint Cloud Public Schools



**Inspector:** Rachel Koehler

**Inspection Date:** 12/13/2006

**Building:** Oak Hill Elementary

**Location:** Exterior Building North side

**Type of Space:** Storm sewer

**Space Classification:** Permit

**Potential Hazards:**

*Potential for oxygen deficiency*

*Engulfment*

*Configuration*

**Number of Entries into Space:** 1

**Other Considerations:**

*City sewer or water*

*Fall hazards*

*Poor lighting*

*Slick/wet surfaces*

**Comments:** None



**Photo Date:** 12/13/2006

**Photo Description**

Storm Sewer

# Confined Space Inventory for Saint Cloud Public Schools



**Inspector:** Rachel Koehler

**Inspection Date:** 12/13/2006

**Building:** Oak Hill Elementary

**Location:** Exterior Building North side

**Type of Space:** Storm sewer

**Space Classification:** Permit

**Potential Hazards:**

*Potential for oxygen deficiency*

*Engulfment*

*Configuration*

**Number of Entries into Space:** 1

**Other Considerations:**

*City sewer or water*

*Fall hazards*

*Poor lighting*

*Slick/wet surfaces*

**Comments:** None



**Photo Date:** 12/13/2006

**Photo Description**

Storm Sewer



# Confined Space Inventory for Saint Cloud Public Schools



**Inspector:** Rachel Koehler

**Inspection Date:** 12/13/2006

**Building:** Oak Hill Elementary

**Location:** Exterior Building East side

**Type of Space:** Storm sewer

**Space Classification:** Permit

**Potential Hazards:**

*Potential for oxygen deficiency*

*Engulfment*

*Configuration*

**Number of Entries into Space:** 1

**Other Considerations:**

*City sewer or water*

*Fall hazards*

*Poor lighting*

*Slick/wet surfaces*

**Comments:** None



**Photo Date:** 12/13/2006

**Photo Description**

Storm Sewer